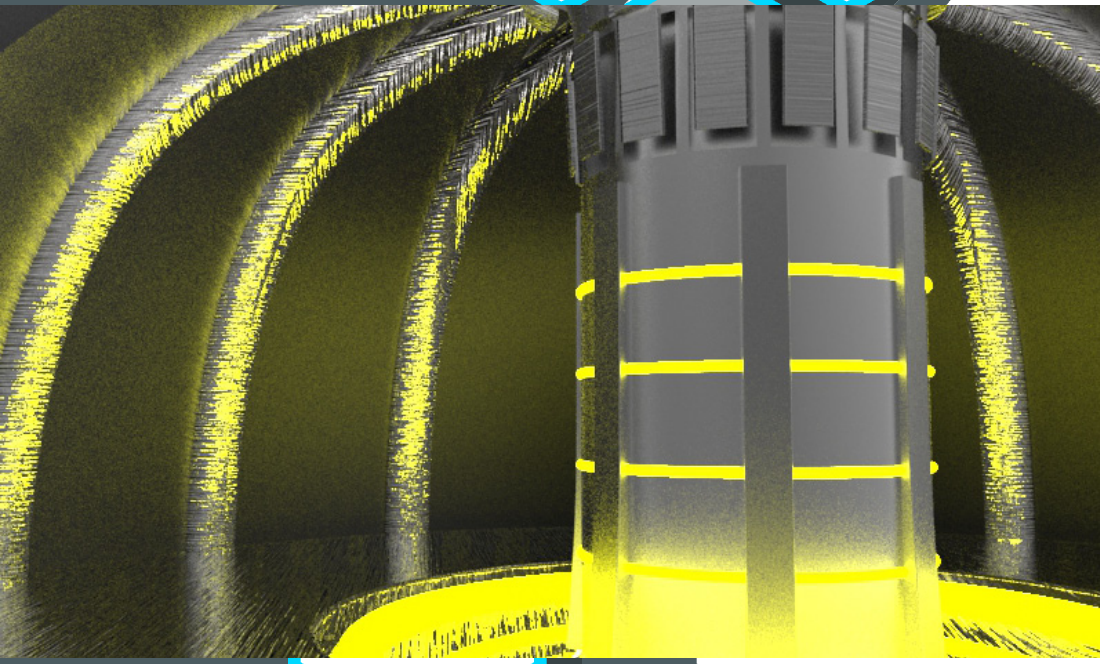
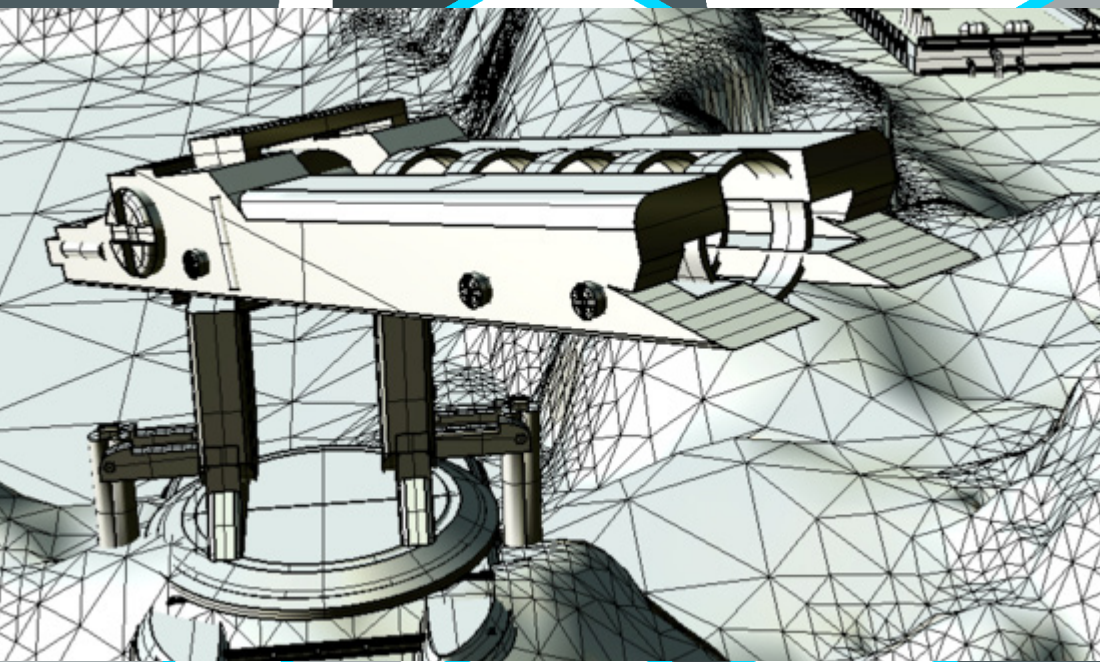


Space Tech and Exploration

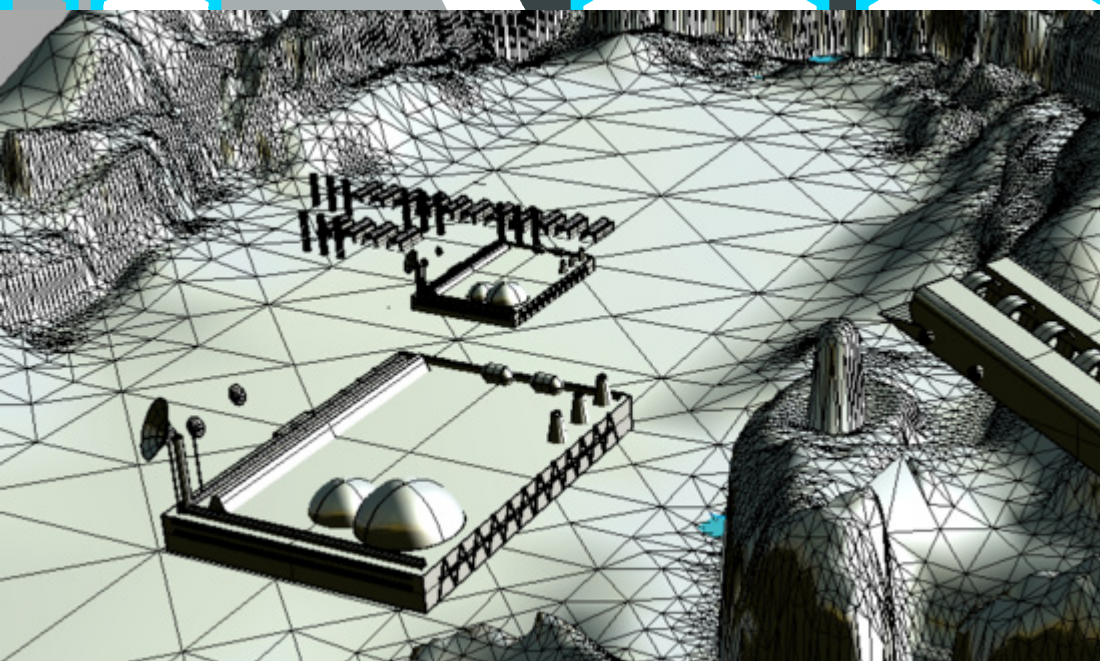
For our project, we explored the idea of colonization in space and how we would address the issues involved. These issues included the obvious things like travel methods, developing shelter, creating defenses, and techniques for growing food and generally surviving on another world. We used a terrain scans of the moon as reference, but designed the terrain ourselves.



To the left is a rendering of the inside of our ship's reactor room.



This is a model of defense cannons designed to protect our settlement from hostile ships. It is designed to fire a large amount of molten magnesium at a target. While this works quite well for hitting large ships that might threaten our colony, it could also serve the practical use of destroying any sort of large space debris that could damage the colony.



Our settlement buildings are designed to be easy to build and contain the various life support systems and comforts necessary to successfully survive as a colony. The dome structures are designed to be transparent, so that people on the inside can see out into the depths of space.

The image below is a design for the cockpit of the ship, while the image down and to the left is a rendering of the ship itself.

